

Production Title: \_\_\_\_\_  
 Contact: \_\_\_\_\_  
 Phone/Fax: \_\_\_\_\_  
 Email: \_\_\_\_\_

## Ohana Camera Expendables

818-427-9191 (cell)

818-812-7872 (fax)

email: OhanaExp@gmail.com

### Camera Accessories

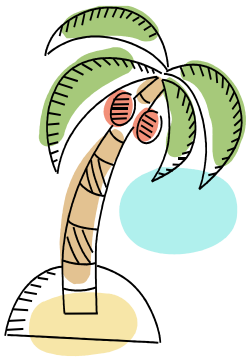
| Qty | Item                                      |
|-----|---|
|     | 12x12 Lindwrap (red, blue)                |
|     | 16x16 Lindwrap (red,blue)                 |
|     | 20x20 Lindwrap (red, blue, silver, black) |
|     | Lightweight Eyebrow                       |
|     | 6 inch Sand Marker                        |
|     | 6 inch T Marker                           |
|     |   |
|     | Mini Mag Replacement Bulb AA              |
|     | Scorpion Replacement Bulb                 |
|     | Surefire Replacement Bulb                 |
|     | Space Blanket (red, blue)                 |
|     |   |
|     | Smithhurst Gray Scales                    |
|     | Macbeth Color Chart                       |
|     | Sharpness Indicator - Digichart           |
|     |   |
|     | Scorpion Flashlight                       |
|     | Bongo Ties                                |
|     | Bungee Balls                              |

| Qty | Item  |
|-----|---|
|     |   |
|     | Any item from Setwear<br>(Please be specific)   |
|     |   |
|     | Glove Clip  |
|     |   |
|     | Garden Tool Set   |
|     |   |
|     | Camera Accessory Bag w/zipper( Natural)<br>(large enough to fit a 6x6 matte box) canvas |
|     | Stanley Fat Max 25 foot tape measure  |
|     | Keson 50 ft. Tape Measure   |
|     | 33' Tape Measure from UK (steel case)   |
|     |   |
|     | Large Tape Roll   |
|     | Small Tape Roll   |
|     |   |
|     | Bag It Large  |
|     | Bag It Small  |

### Office Supplies

| Qty | item   |
|-----|--|
|     | Bic Clear Clic (Black or Blue Ink)           |
|     | Bic Clic Stic (Black or Blue Ink)            |
|     | Mechanical Pencil                            |
|     | Marks A Lots Slant Tip Dry Erase Marker      |
|     | Expo II Bullet Point Dry Erase Marker        |
|     | Staedtler Dry Erase Marker (slant)           |
|     | Kleen Slate Dry Erase Marker (bullet)        |
|     |  |
|     | Kleen Slate Eraser (Blue, Red, Black, Green) |
|     | Triple Thick Chalk                           |
|     | White Regular Chalk                          |

| Qty. | item                                     |
|------|--|
|      | Paint Pen Set - (blk,red,blu,wht,yllw)   |
|      | Paint Pen (white, red, green,blue,black) |
|      | Stabilo (black, red, white,yellow)       |
|      | Omnichrome (black, red, white,yellow)    |
|      |  |
|      | Orange Stick                             |
|      | Lumocolor superfine point 4 pack         |
|      | Lumocolor superfine point 6 pack         |
|      | Lumocolor (black, blue, red, green)      |
|      |  |
|      | Rubberbands                              |



Production Title: \_\_\_\_\_  
 Contact: \_\_\_\_\_  
 Phone/Fax: \_\_\_\_\_  
 Email: \_\_\_\_\_

## Ohana Camera Expendables

818-427-9191 (cell)

818-812-7872 (fax)

email: OhanaExp@gmail.com

### Office Supplies

|  |
|--|
| Color Regular Chalk                        |
| Metal Regular Chalk Holder                 |
| Large Sidewalk Chalk in a Bucket           |
| Straitline Chalk (rd,wht,f.grn,yllw, blue) |
| Wirebound 3 x 5 Memo Pad                   |
|  |
| Marks A Lot Permanent Marker - Black       |
| Sharpie King Size Marker - Black           |
|  |
|  |
| Twin Tip Sharpie (Black, Red, Blue)        |
|  |

|   |
|---|
| Fiskars 5 inch Teflon Scissors          |
|   |
| Ptouch TZ 1/2 inch B/W                  |
| Ptouch TZ 1/2 inch B/C                  |
| Ptouch TZ 3/4 inch B/C                  |
| Ptouch TZ 3/4 inch B/W                  |
| Ptouch TZ 1 inch B/C                    |
| Ptouch TZ 1 inch B/W                    |
| Ptouch 3/4 inch Blk/Grn,Blk/Red,Blk/Blu |
| Camera Log Book (red,blue,green,yellow) |
|   |
| Razor Blades (ea)                       |

### Flammables

| Qty | Item                                 |
|-----|--------------------------------------|
|     | Dustpro Nozzle                       |
|     | Dustpro Refill*                      |
|     | Dustoff Classic Metal Short Nozzle   |
|     | Dustoff Classic Refill*              |
|     | Dustoff Plus 360 Vector Valve Nozzle |
|     | Dustoff Plus Gray Can Refill*        |
|     | Goo Gone Spray 12 oz.                |
|     | CO2 refill                           |
|     |                                      |

| Qty. | Item  |
|------|---|
|      | WD40 Spray                                  |
|      | Zippo Lighter Fluid                         |
|      | Pancro Lens Cleaner 6 oz.*                  |
|      | Cinepro (Ultra Clarity) Spray Cleaner 6 oz. |
|      | Triflow Spray                               |
|      | Denatured Alcohol                           |
|      | Acetone                                     |
|      | Silicone Spray                              |
|      | Dow Scrubbing Bubbles                       |

Dustoff, Dust Pro and Pancro may be shipped directly from vendor by Fed X Ground or UPS Ground to any state but Hawaii. Shipping fees will apply.

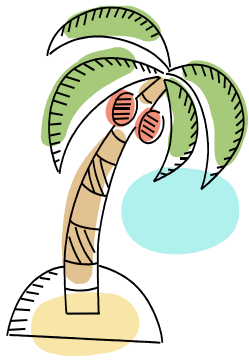
Other flammables will be sold to productions shooting in California or may be shipped by production truck with original order.

We are unable to fedx or ups these items.

### Cleaning Cloths

| Qty | Item                                  |
|-----|---------------------------------------|
|     | Diapers (8 per bag)                   |
|     | Selvyt Cloth from UK                  |
|     | Large Kimwipes                        |
|     | Small Kimwipes                        |
|     |                                       |
|     | Mikros Cloth 3X3 OR 7X7               |
|     | Lens Tissue                           |
|     | 2 inch wide STUBBY handle paint brush |

| Qty. | Item                               |
|------|------------------------------------|
|      | Wet Ones - citrus or fresh scent   |
|      | Clorox Hand Sanitizer Spray - 2 oz |
|      | Purell Hand Sanitizer Gel - 12 oz  |
|      | Baby Wipes - unscented             |
|      | 6 inch Cotton Applicators          |
|      | 3 inch Cotton Applicators          |
|      | 6 inch Foam Tip Applicators        |
|      |                                    |



Production Title: \_\_\_\_\_  
 Contact: \_\_\_\_\_  
 Phone/Fax: \_\_\_\_\_  
 Email: \_\_\_\_\_

## Ohana Camera Expendables

818-427-9191 (cell)

818-812-7872 (fax)

email: OhanaExp@gmail.com

### Eyepiece Covers

| Qty | Item                                      |
|-----|---|
|     | Chamois Eyepiece Cover - Large -Bluestar  |
|     | Chamois Eyepiece Cover - Small - Bluestar |
|     |   |
|     | Microfiber Eyepiece Cover - Large - Red   |
|     | Microfiber Eyepiece Cover - Large - Blue  |
|     |   |
|     | Microfiber Eyepiece Cover - Small - Red   |
|     | Microfiber Eyepiece Cover - Small - Blue  |

| Qty | Item                                   |
|-----|--|
|     | Fleece Eyepiece Cover - Small - Red    |
|     | Fleece Eyepiece Cover - Small - Blue   |
|     |  |
|     | Fleece Eyepiece Cover - Large - Red    |
|     | Fleece Eyepiece Cover - Large - Blue   |
|     |  |
|     | Chamois Eyepiece Cover - Stitched - Sm |

### Batteries

| Qty | Item                                 |
|-----|--------------------------------------|
|     | 3 Volt Lithium Battery ( flashlight) |
|     | 6 Volt Lithium Battery (meter)       |
|     | 9 Volt Battery                       |
|     | 1.5V LR 41 Battery                   |
|     | CR2032 3 Volt Lithium Button Battery |
|     | CR2016 3 Volt Lithium Button Battery |

| Qty | Item         |
|-----|--------------|
|     | AA Battery   |
|     | AAAA Battery |
|     | AAA Battery  |
|     |              |
|     | C Battery    |
|     | D Battery    |

### Velcro (cut to length) sold by the foot

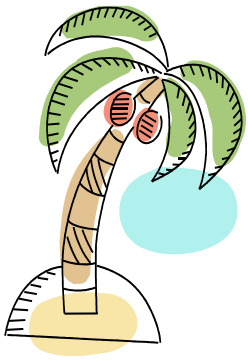
| Qty | Item                                   |
|-----|--|
|     | 1 inch black hook velcro               |
|     | 1 inch black loop velcro               |
|     | 2 inch black hook velcro               |
|     | 2 inch black loop velcro               |
|     | 1 inch dual Lock Velcro                |
|     | 2 inch dual lock velcro                |
|     | 1 inch industrial strength hook velcro |
|     | 1 inch industrial strength loop velcro |
|     | 2 inch industrial strength hook velcro |
|     | 2 inch industrial strength loop velcro |

| Qty | Item   |
|-----|--|
|     | 2 inch blue hook velcro                                    |
|     | 2 inch blue loop velcro                                    |
|     | 2 inch green hook velcro                                   |
|     | 2 inch green loop velcro                                   |
|     | 2 inch yellow hook velcro                                  |
|     | 2 inch yellow loop velcro                                  |
|     | 2 inch red hook velcro                                     |
|     | 2 inch red loop velcro                                     |
|     |  |
|     | <b>3/4 inch One Wrap for cables (hook/loop all in one)</b> |

### Gel Filters

| Qty | Item                          |
|-----|-------------------------------|
|     | Kodak Wratten Gel Filter 81EF |
|     | Kodak Wratten Gel Filter 85   |
|     | Kodak Wratten Gel Filter 85N3 |
|     | Kodak Wratten Gel Filter 85N6 |

| Qty | Item                          |
|-----|-------------------------------|
|     | Kodak Wratten Gel Filter 85N9 |
|     | Kodak Wratten Gel Filter ND3  |
|     | Kodak Wratten Gel Filter ND6  |
|     | Kodak Wratten Gel Filter ND9  |



Production Title: \_\_\_\_\_  
 Contact: \_\_\_\_\_  
 Phone/Fax: \_\_\_\_\_  
 Email: \_\_\_\_\_

## Ohana Camera Expendables

818-427-9191 (cell)

818-812-7872 (fax)

email: OhanaExp@gmail.com

### Electrical Tape 3/4 inch

| Qty | Item  |
|-----|-------|
|     | Black |
|     | Blue  |
|     | Green |

| Qty | Item   |
|-----|--------|
|     | Red    |
|     | White  |
|     | Yellow |

### Cloth Tape 1 inch

| Qty | Item       |
|-----|------------|
|     | Black Core |
|     | White Core |
|     | Black      |
|     | Blue       |
|     | Red        |
|     | White      |

| Qty | Item           |
|-----|----------------|
|     | Yellow         |
|     | Pumpkin Orange |
|     | Purple         |
|     | Burgundy       |
|     | Forest Green   |

### Gaffers Tape 2 inch

| Qty | Item  |
|-----|-------|
|     | Black |
|     | Blue  |
|     | Gray  |

| Qty | Item   |
|-----|--------|
|     | Red    |
|     | White  |
|     | Yellow |

### Photoblack Tape

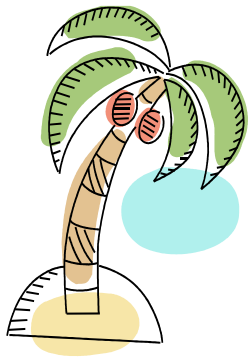
| Qty | Item                                 |
|-----|--------------------------------------|
|     | Photoblack 2 inch                    |
|     | Photoblack 2 inch (1 inch wide core) |

| Qty | Item              |
|-----|-------------------|
|     | Photoblack 1 inch |

### Flourscent Cloth and Gaffers Tape

| Qty | Item   |
|-----|--------|
|     | Green  |
|     | Pink   |
|     | Orange |
|     | Yellow |

| Qty | Item          |
|-----|---------------|
|     | Green 2 inch  |
|     | Pink 2 inch   |
|     | Orange 2 inch |
|     | Yellow 2 inch |



Production Title: \_\_\_\_\_  
 Contact: \_\_\_\_\_  
 Phone/Fax: \_\_\_\_\_  
 Email: \_\_\_\_\_

## Ohana Camera Expendables

818-427-9191 (cell)

818-812-7872 (fax)

email: OhanaExp@gmail.com

### Paper Tape

| Qty | Item            |
|-----|-----------------|
|     | Black 1/2 inch  |
|     | Blue 1/2 inch   |
|     | Green 1/2 inch  |
|     | Orange 1/2 inch |
|     | Red 1/2 inch    |
|     | White 1/2 inch  |
|     | Yellow 1/2 inch |
|     |                 |
|     |                 |
|     | Black 2 inch    |
|     | White 2 inch    |
|     |                 |
|     |                 |
|     | White 1/4 inch  |
|     |                 |
|     |                 |
|     | White 3/4 inch  |
|     |                 |
|     |                 |
|     |                 |

| Qty | Item             |
|-----|------------------|
|     | Black 1 inch     |
|     | Blue 1 inch      |
|     | Green 1 inch     |
|     | Orange 1 inch    |
|     | Red 1 inch       |
|     | White 1 inch     |
|     | Yellow 1 inch    |
|     | Purple 1 inch    |
|     | Pink 1 inch      |
|     | Teal 1 inch      |
|     | Grey 1 inch      |
|     | Lt. Brown 1 inch |
|     | Navy 1 inch      |
|     |                  |
|     |                  |
|     |                  |
|     |                  |

### Flourscent Paper 1/2 and 1 inch Tape

| Qty | Item       |
|-----|------------|
|     | Green 1/2  |
|     | Orange 1/2 |
|     | Pink 1/2   |
|     | Yellow 1/2 |

| Qty | Item   |
|-----|--------|
|     | Green  |
|     | Orange |
|     | Pink   |
|     | Yellow |

### Miscellaneous Tape

| Qty | item                           |
|-----|--------------------------------|
|     | Crystal Clear 2 inch           |
|     |                                |
|     | J lar 2 inch                   |
|     |                                |
|     | Glow in the Dark Tape 1/2 inch |
|     | Glow in the Dark Tape 1 inch   |

| Qty | Item                                |
|-----|-------------------------------------|
|     | Do Not Xray Tape                    |
|     |                                     |
|     | 1/8 Chart Pak Tape (white, yellow)  |
|     | 1/4 Chart Pak Tape (white, yellow)  |
|     | 1/16 Chart Pak Tape (white, yellow) |
|     | 3/32 Chart Pak Tape (white, yellow) |

### Miscellaneous Supplies

| Qty | item                                |
|-----|-------------------------------------|
|     | 30 Gallon Clear Trash Bag (100/box) |

| Qty | Item                                |
|-----|-------------------------------------|
|     | 40 Gallon Clear Trash Bag (100/box) |

If you don't find it on the list, please ask! Give us a day to locate it, quote and delivery.